

# Real Estate Auction

**SPECIAL REAL ESTATE CLOSE TO  
PUTNAM, OKLAHOMA**

**THURSDAY, JULY 9, 2026 • 10:00 A.M.**

**SALE LOCATION:** Dewey County Court House, Taloga, Oklahoma

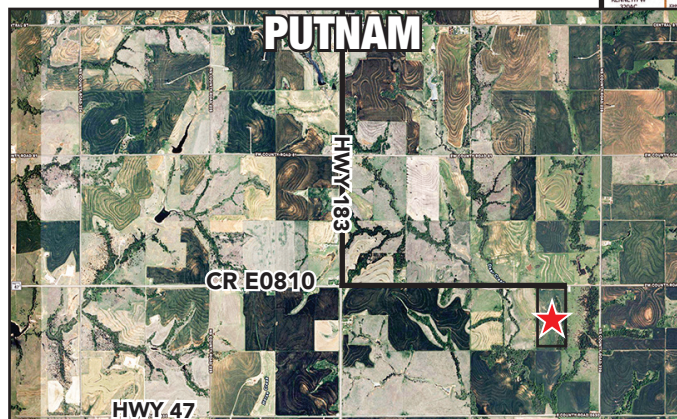
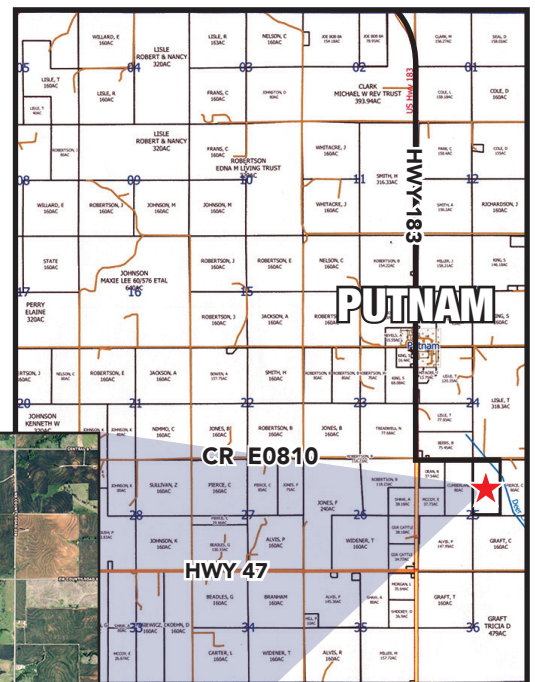
**PROPERTY LOCATION:** From Putnam, Oklahoma, Go 1 mile South on Highway 183, then East .50 miles on County Road E0810 Road to the property location. Watch for Auction Signs!

**AUCTIONEER'S STATEMENT:** The property located close to Putnam, Oklahoma would be a good place for a homesite or a good addition to a farming operation, We invite you to attend this special auction.

**PROPERTY DESCRIPTION:** This property would be a good homesite or a good addition to a farming operation. The property includes 80 Acres of real estate.

**LEGAL DESCRIPTION:** The West half of the Northeast quarter (W2 NE4) of Section 25, T16N, R17 W.1.M., Dewey County, Oklahoma (surface Only)

**REAL ESTATE TERMS:** 15% of the purchase price will be placed in escrow day of sale. Property will be conveyed by Warranty Deed. All measurements are approximate. (Selling surface only) Subject to the confirmation of the District Court. Possession occurs on November 1, 2026.



FOR MORE INFORMATION  
CALL 580-225-6743 OR GO TO  
[GENECOBBAUCTION.COM](http://GENECOBBAUCTION.COM)



**SELLER: HAURY FAMILY**



## Gene Cobb Auction & Realty

Richard E. Cobb, CAI, AARE • Auctioneer/Real Estate Broker • Certified Appraiser

580-225-6743 • P.O. Box 982 • Elk City, Oklahoma 73648

Rhett D. Cobb • Licensed Auctioneer • Real Estate Broker - Texas & Oklahoma

806-206-1554 • P.O. Box 763 • Canyon, Texas 79015 • Texas Broker # 0549348 • TDLR # 16204 • Oklahoma Broker # 142951

We Act As Agents & Agents Only • Not Responsible For Accidents • Any Announcements Made Sale Day Supersede All Other Announcements

Every effort has been made to assure the accuracy of the information with no guarantee of authenticity.

**VISIT US ON THE WORLD WIDE WEB FOR A SCHEDULE OF UPCOMING AUCTIONS  
AND TO VIEW MORE PICTURES OF THIS SALE: <http://www.genecobbauction.com>**

